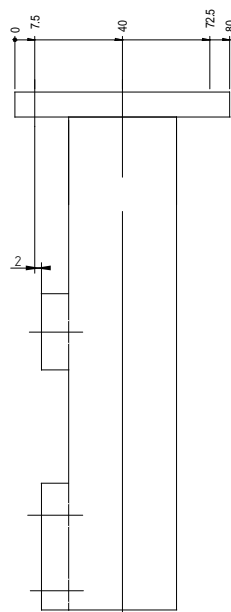
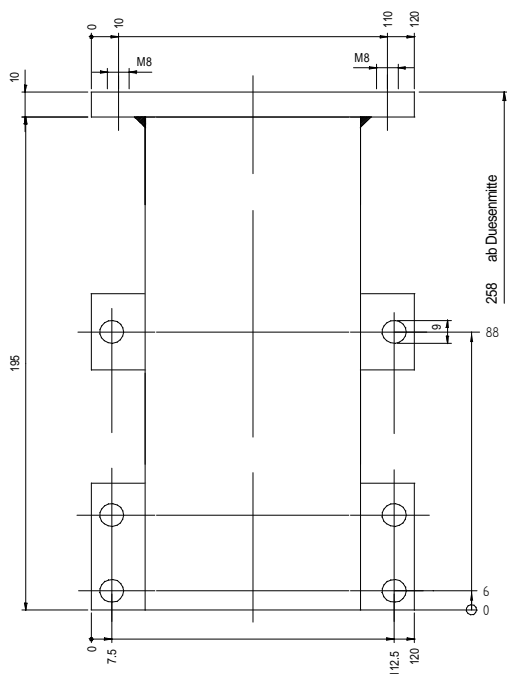


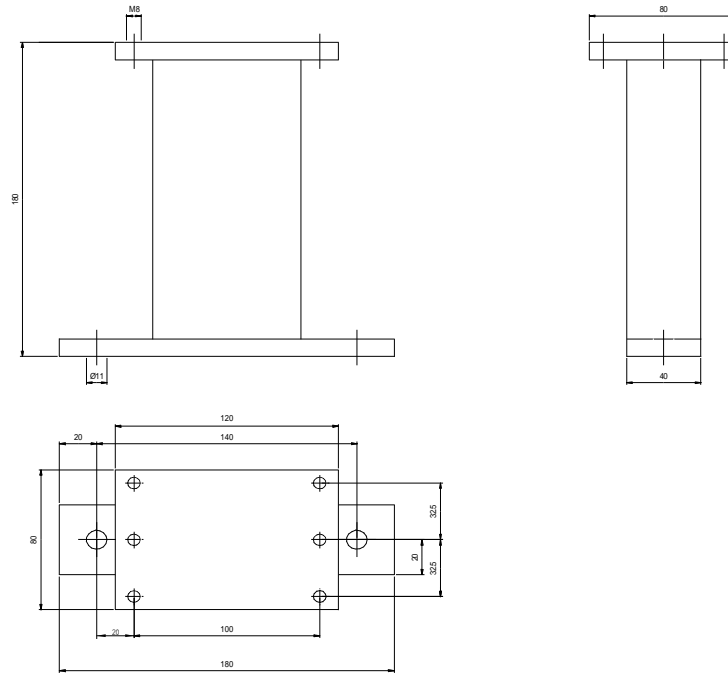
Consoles diagonally
For a PP 0.3 / PP 13.0 / SP 0.5 / SP 1.5 to a A 220 S, A 320 S

HS.Nr. V1479



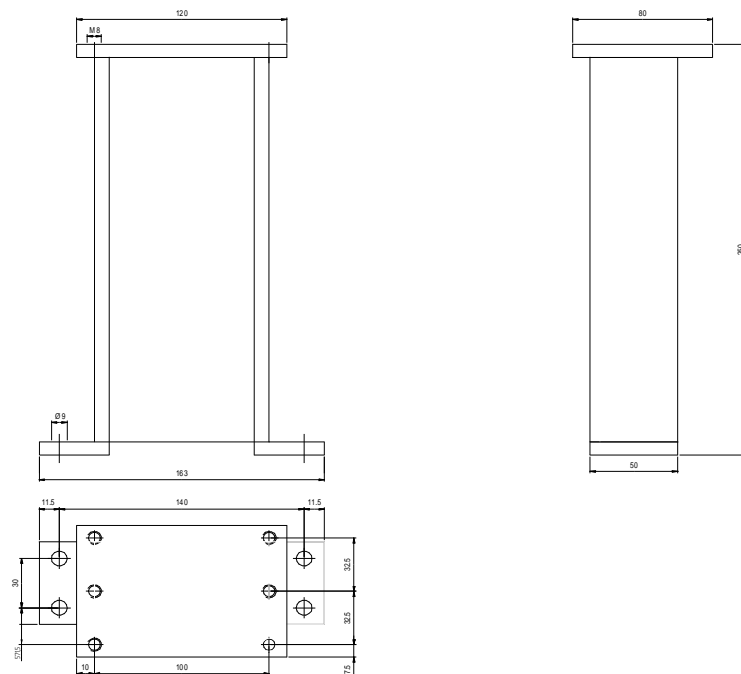
Console 205 mm
For a PP 0.3 / PP 13.0 / SP 0.5 / SP 1.5 to a A 170 CMD

HS.Nr. V1081



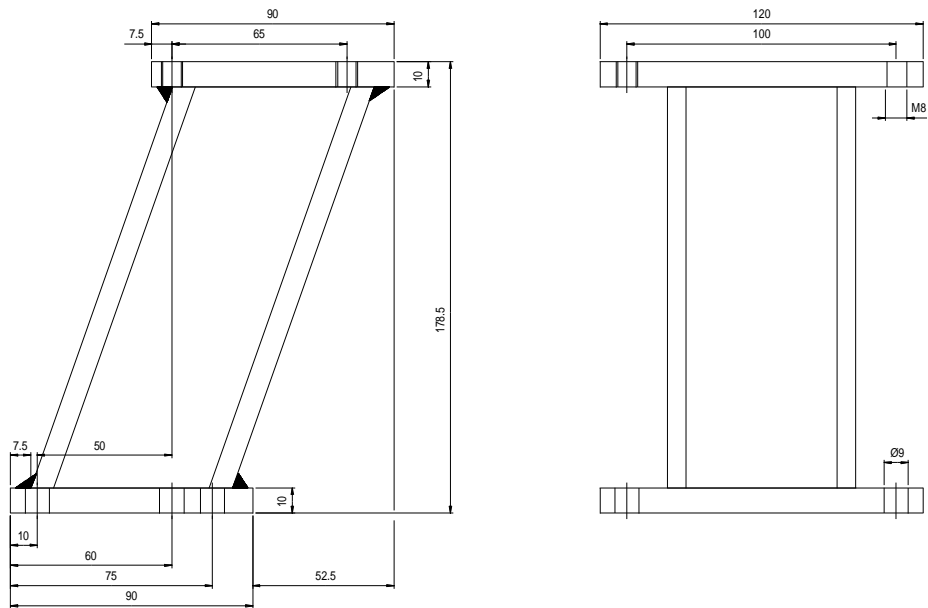
Console 180 mm
For a PP 0.3 / PP 13.0 / SP 0.5 / SP 1.5 to a A 221

HS.Nr. V1082



Console 250 mm
For a PP 0.3 / PP 13.0 / SP 0.5 / SP 1.5 to a A 221

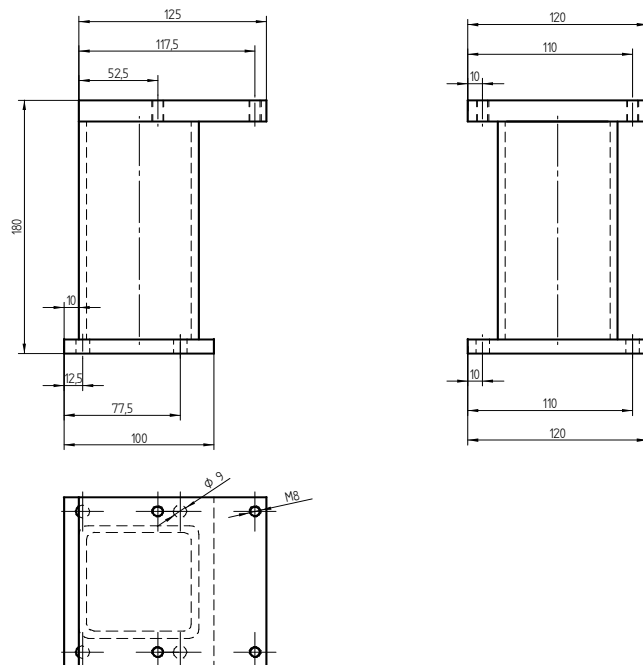
HS.Nr. V1083



Console Mini

For an PP 0.3 / PP 13.0 / SP 0.5 / SP 1.5 to a A 270 S, A320 S

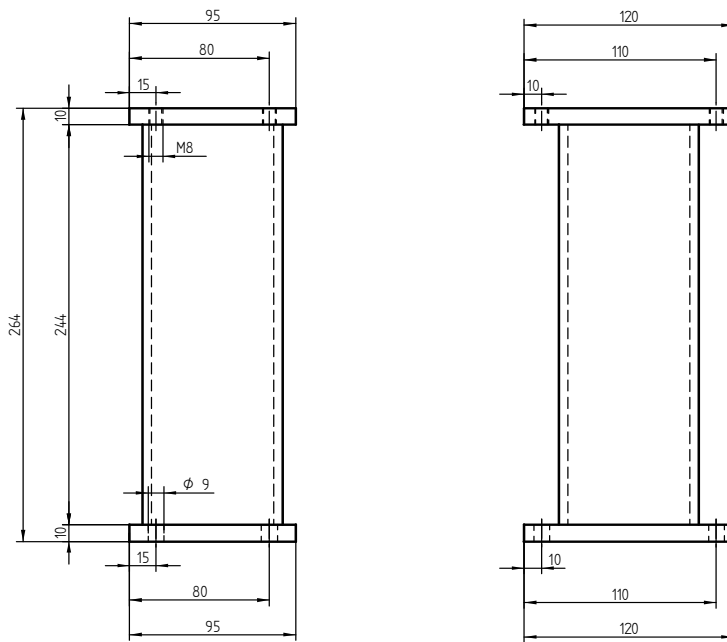
HS.Nr. V16231



Console Mini

HS.Nr. V051200

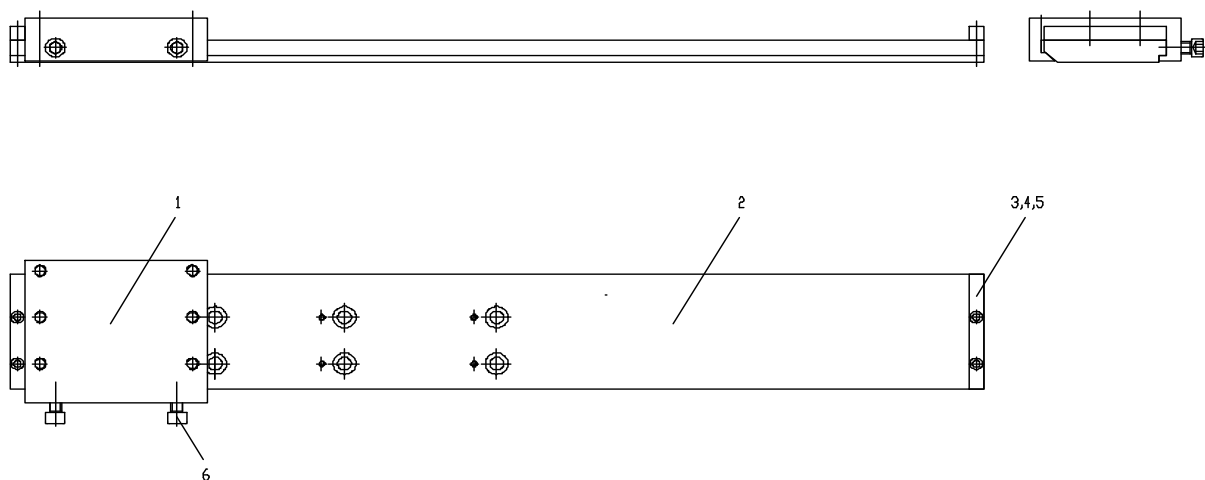
For a PP 0.3 / PP 13.0 / SP 0.5 / SP 1.5 to a A 270 S, A 320 S starting from year of construction 2000/32



Console Mini

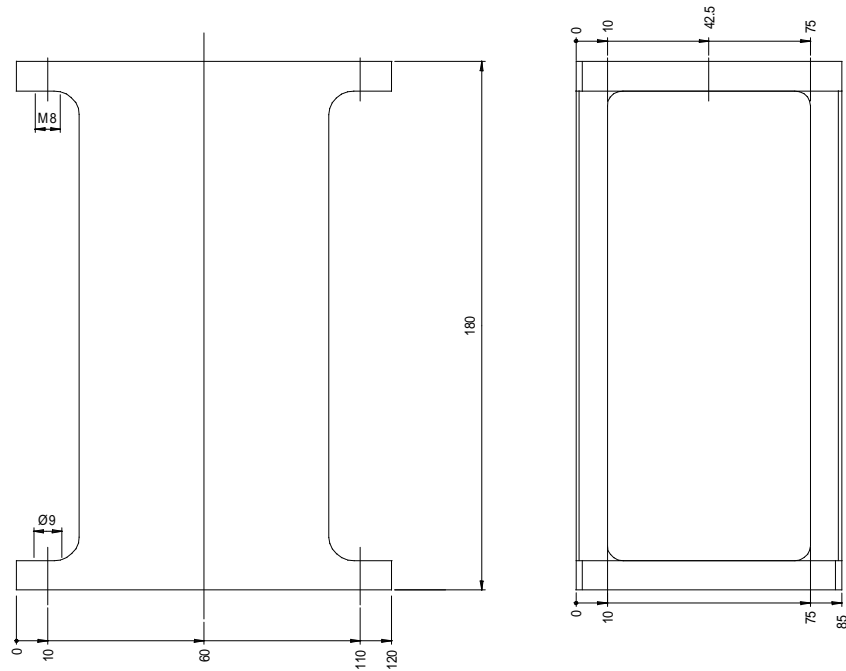
For a PP 0.3 / PP 13.0 / SP 0.5 / SP 1.5 to a A 420 S, A 470 S

HS.Nr. V348020



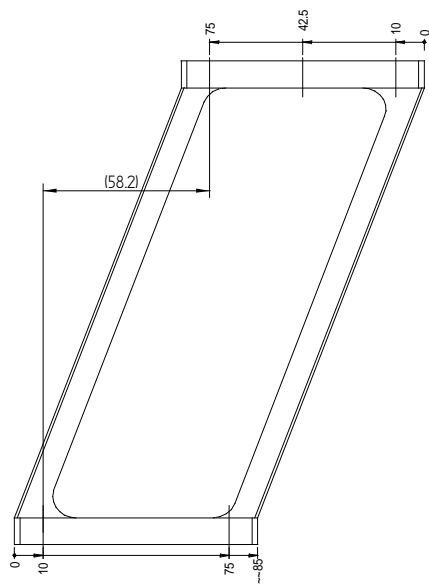
Slide Console "Vario" to a A 270 / 370 / 470

HS.Nr. V1475



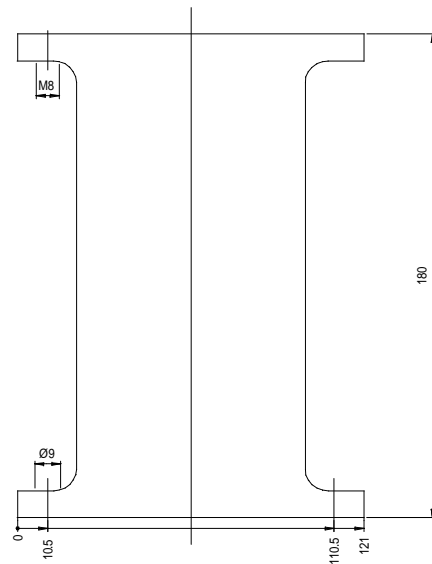
Console straight 180 mm
For PP 0.3 / PP 13.0 / SP 0.5

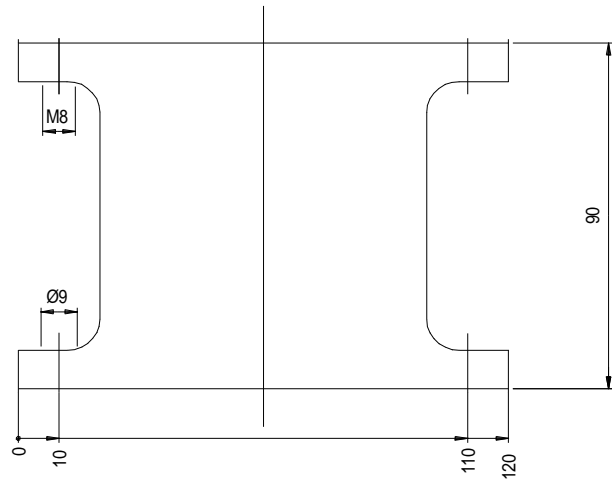
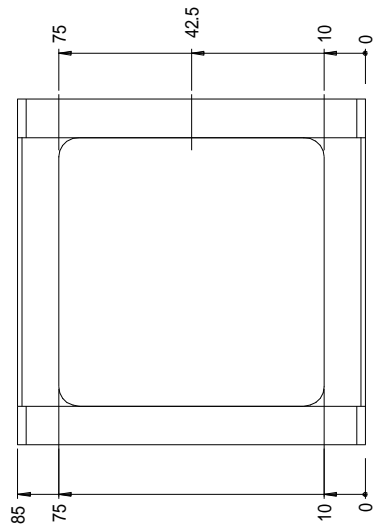
HS.Nr. V1001



Consol diagonally 180 mm
For PP 0.3 / PP 13.0 / SP 0.5 / SP 1.5

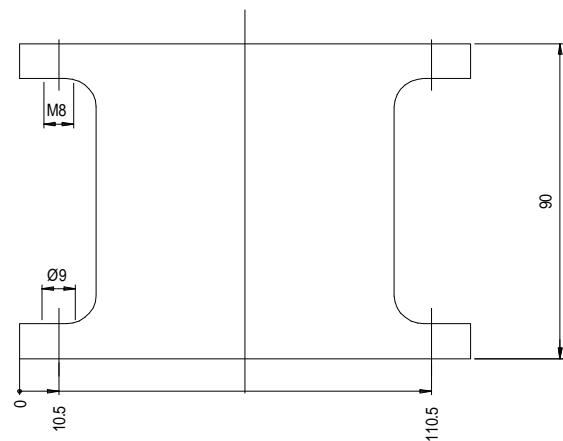
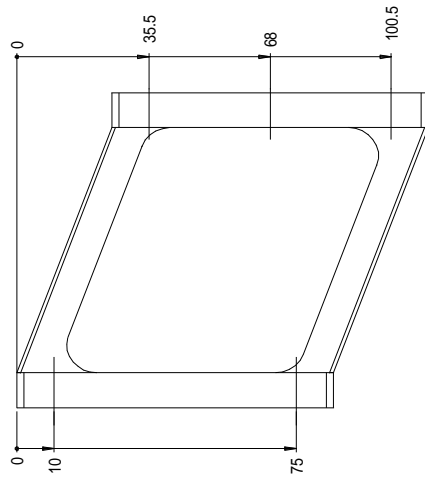
HS.Nr. V1006





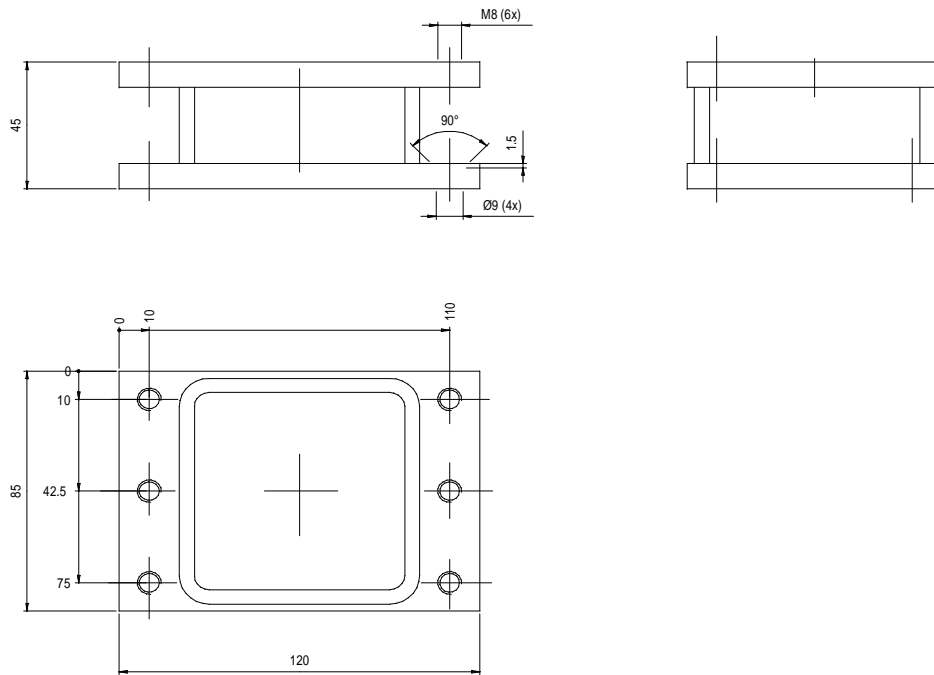
Console straight 90 mm
For PP 0.3 / PP 13.0 / SP 0.5 / SP 1.5

HS.Nr. V1002



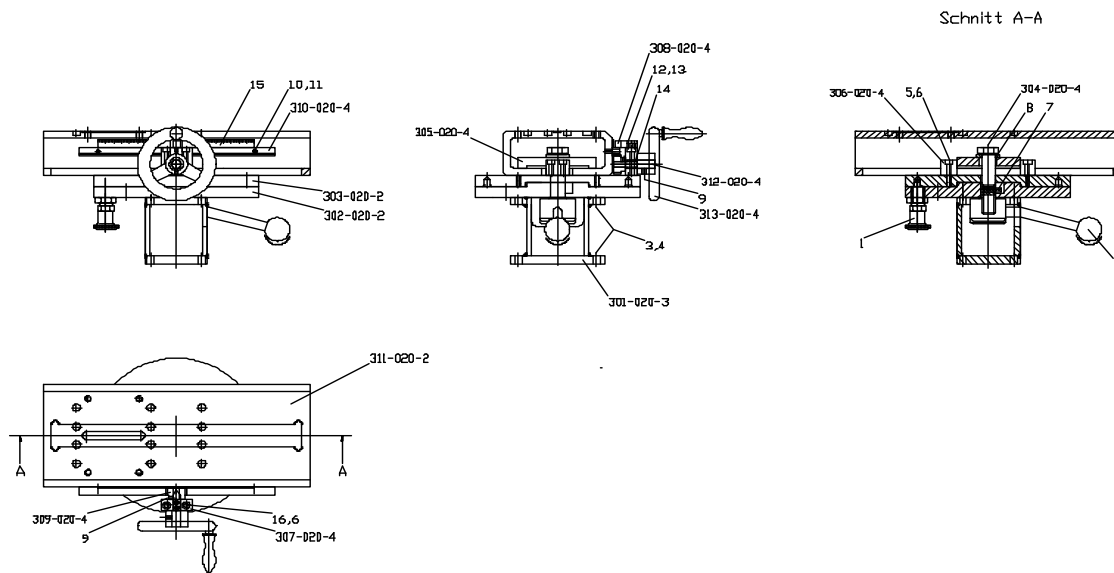
Consol diagonally 90 mm
For PP 0.3 / PP 13.0 / SP 0.5 / SP 1.5

HS.Nr. V1005



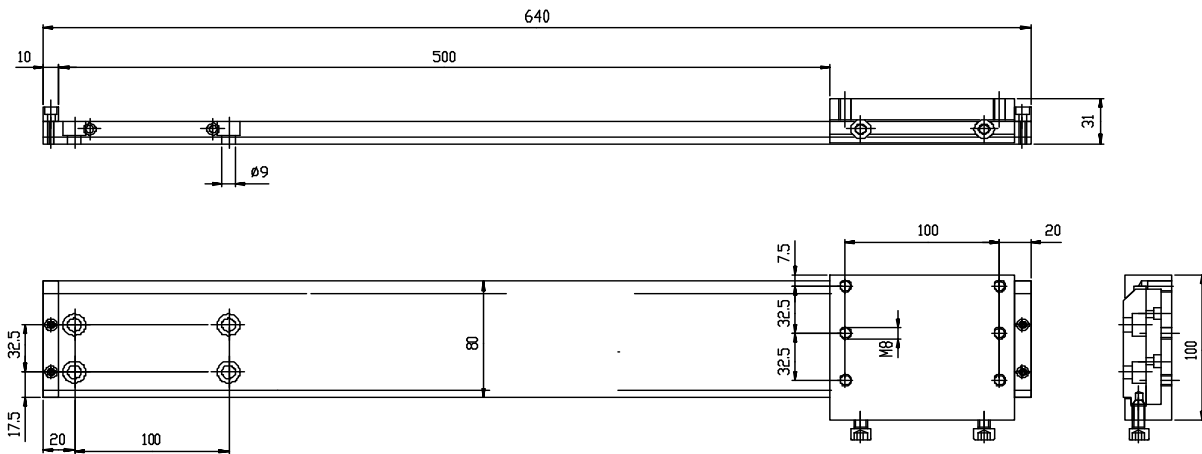
Console straight 45 mm
For PP 0.3 / PP 13.0 / SP 0.5 / SP 1.5

HS.Nr. V1008



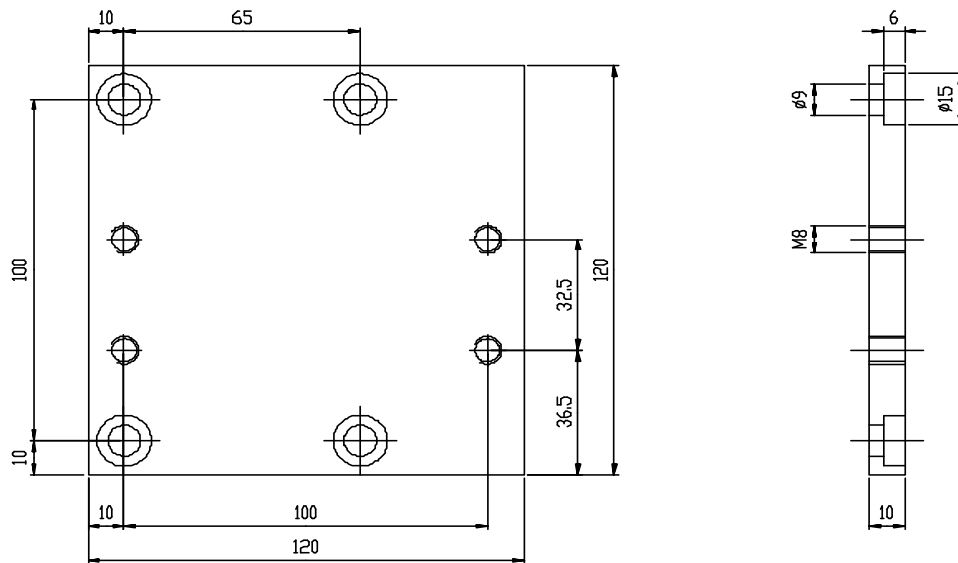
Turning console 2 x 90 °indexes

HS.Nr. V2091



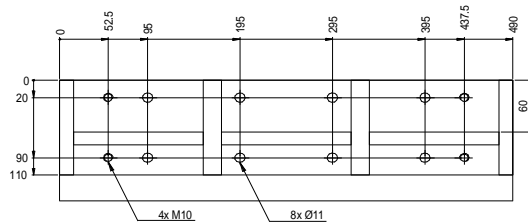
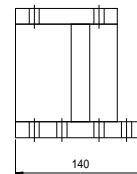
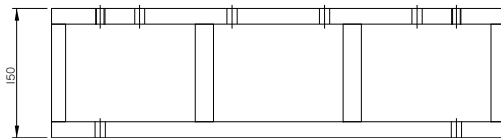
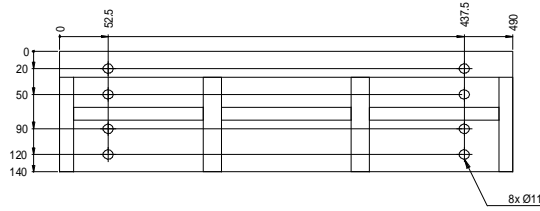
Slide consoles in different lengths
 For PP 0.3 / PP 13.0 / SP 0.5 / SP 1.5

500 mm	HS.Nr. V1011
600 mm	HS.Nr. V1016
700 mm	HS.Nr. V1010
800 mm	HS.Nr. V1504



Longitudinal adapter for slide console

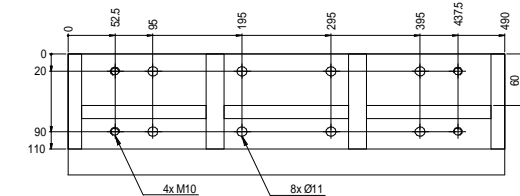
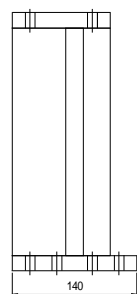
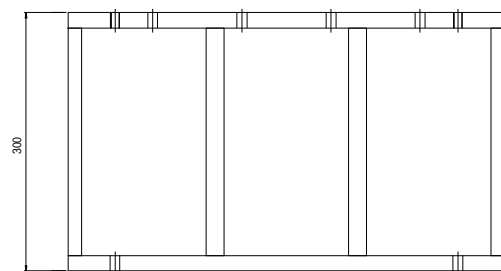
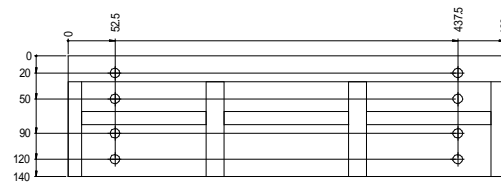
HS.Nr. V1020



Console standard 150 mm

SL 20

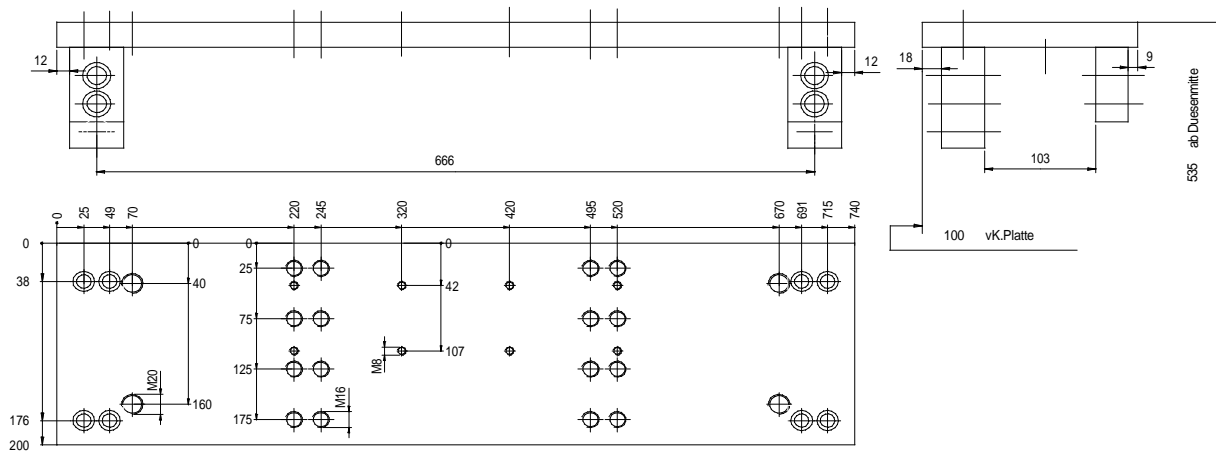
HS.Nr. V060200



Console standard 300 mm

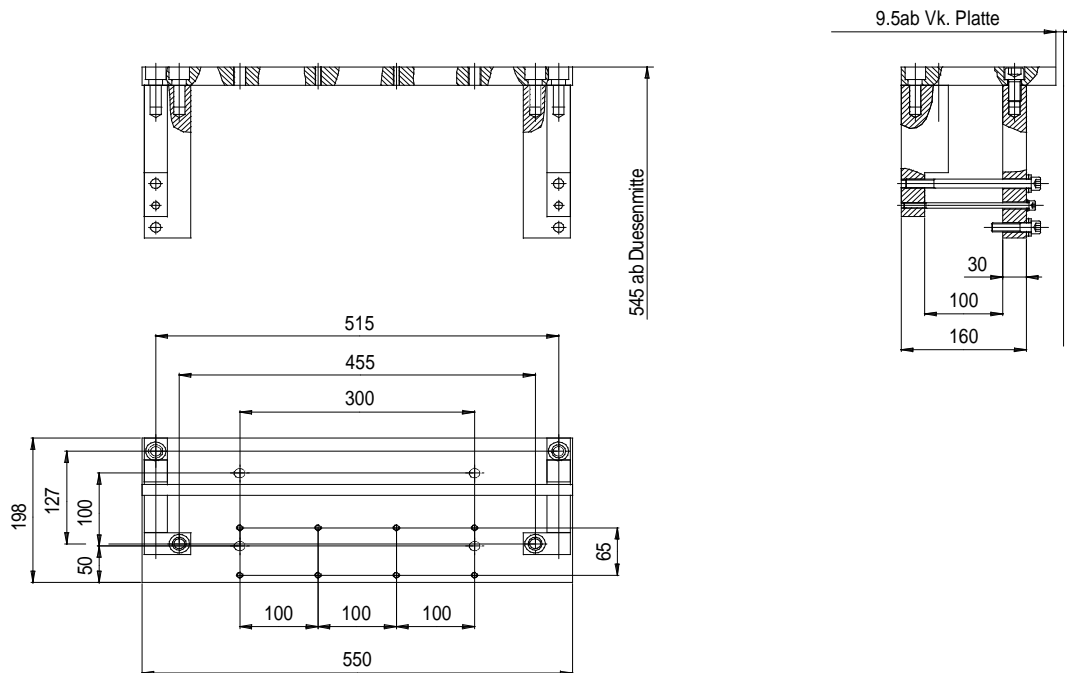
SL 20

HS.Nr. V061200



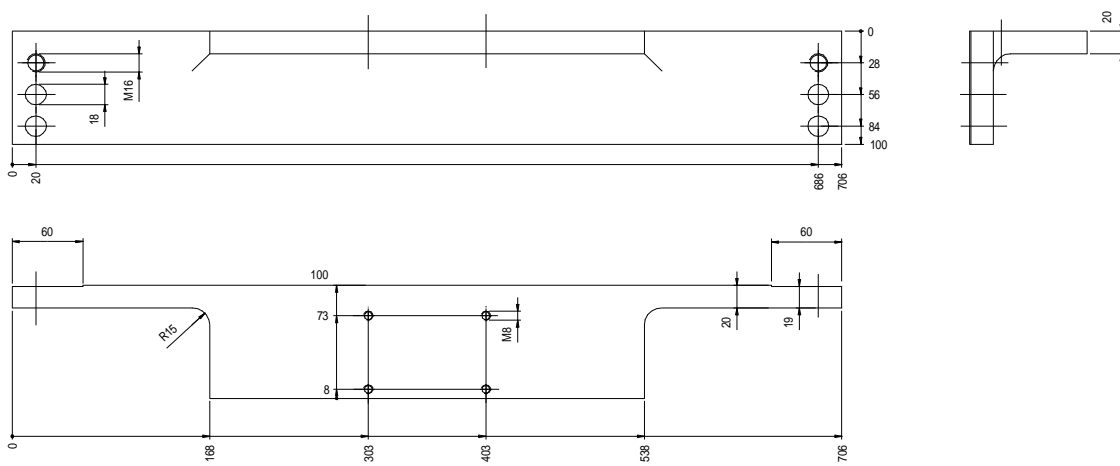
Mounting plate to A 470 / 520 C / M / V

HS.Nr. V1631



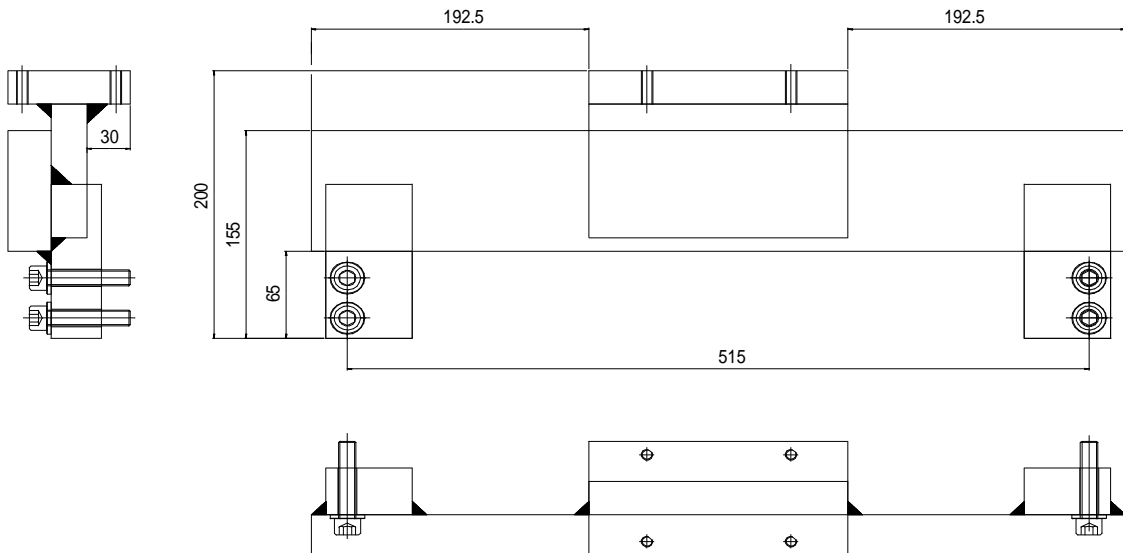
Mounting plate to A 370 / 420 C / M / V / CMD

HS.Nr. V1695



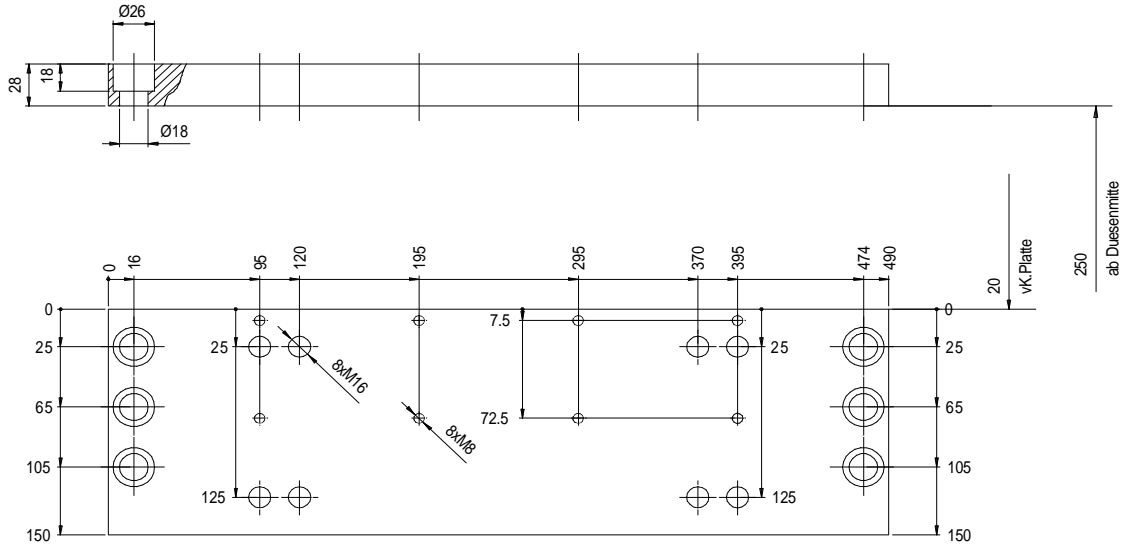
Mounting plate to A 470 / 520 C / M / V

HS.Nr. V1675



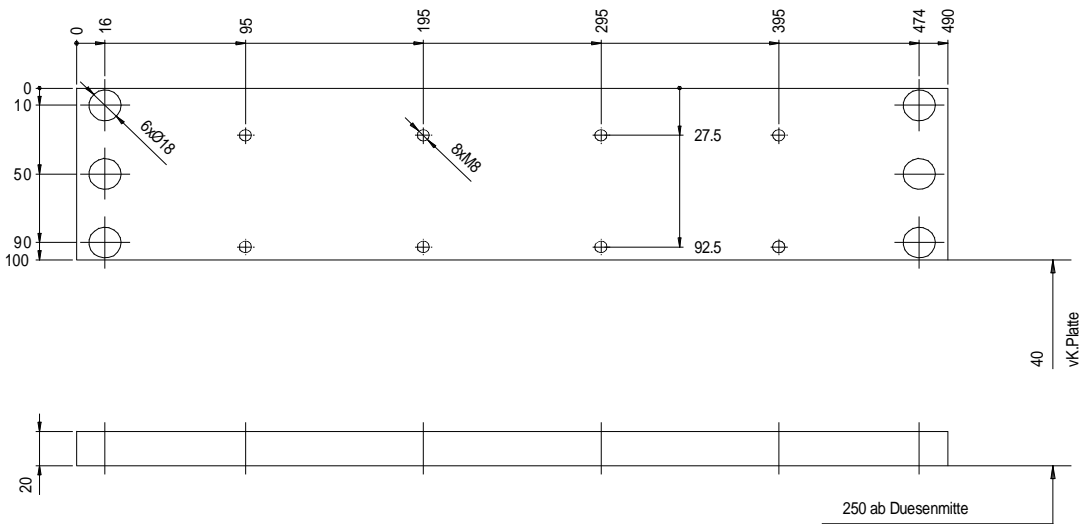
Mounting plate to A 370 / 420 C / M / V

HS.Nr. V1709



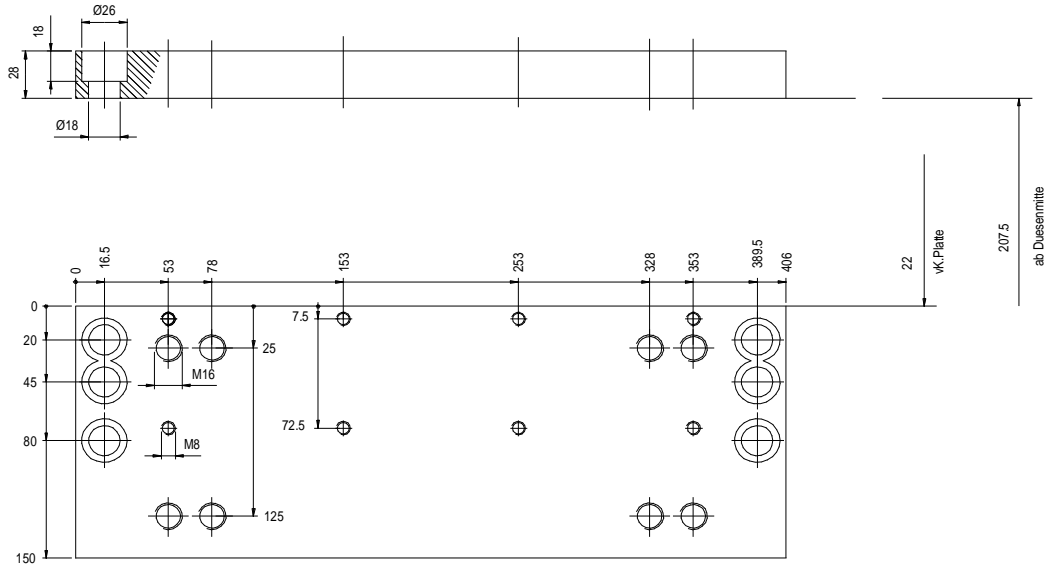
Mounting plate to A 320 D / H / M

HS.Nr. V1622



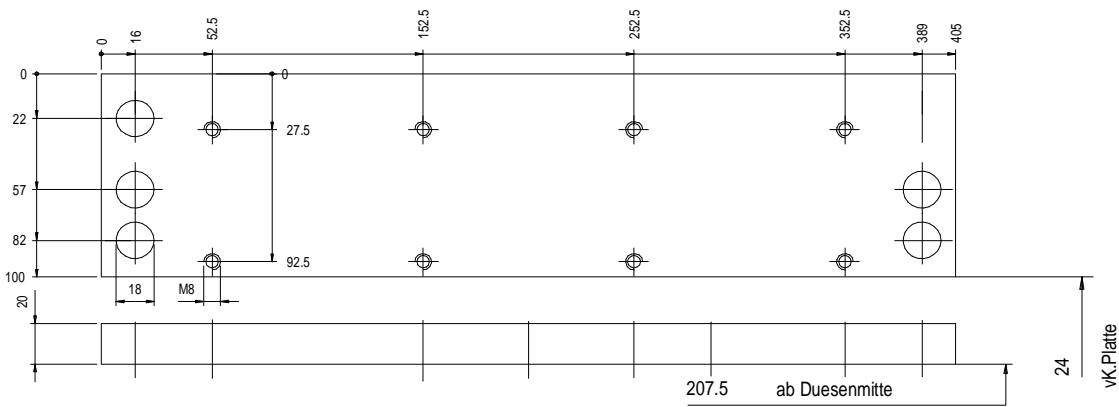
Mounting plate to A 320

HS.Nr. V1089



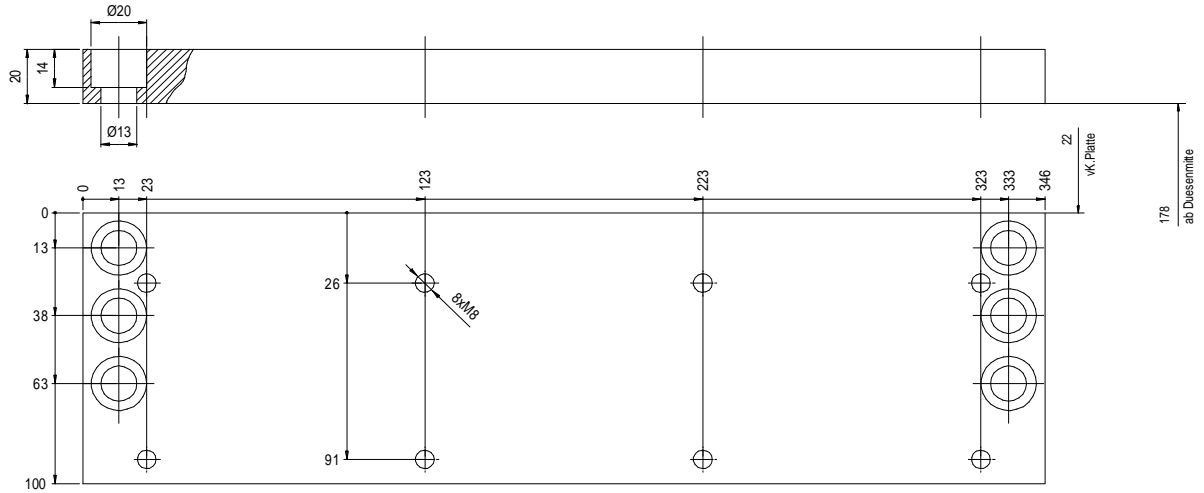
Mounting plate to A 270 D / H / M / V

HS.Nr. V1621



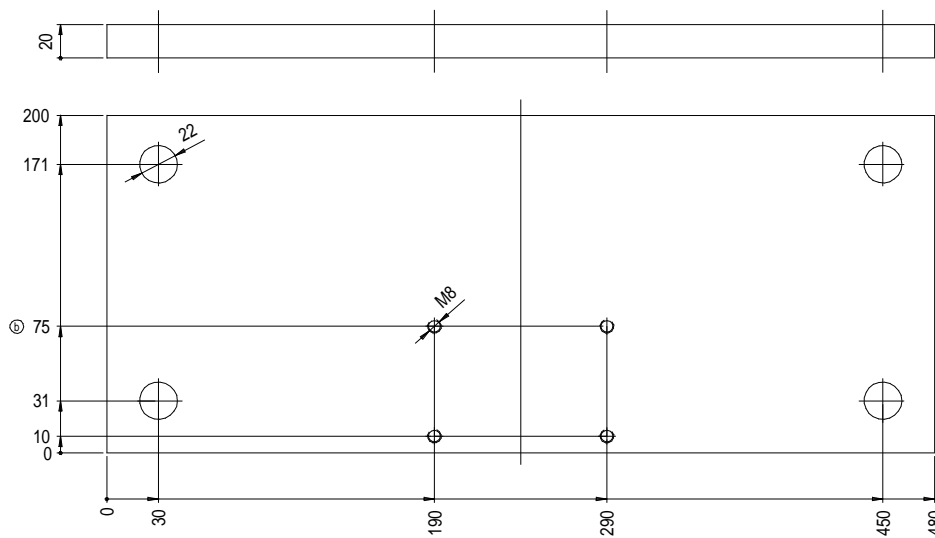
Mounting plate to A 270

HS.Nr. V1088



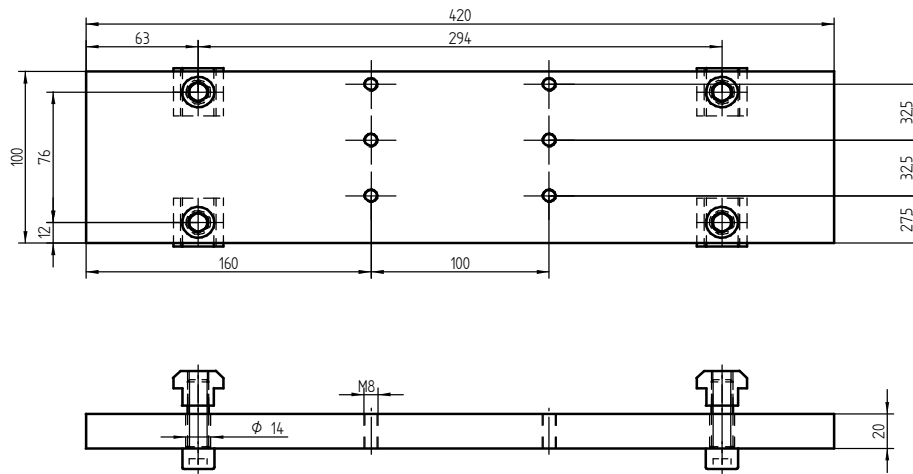
Mounting plate to A 220 D / H / M

HS.Nr. V1609



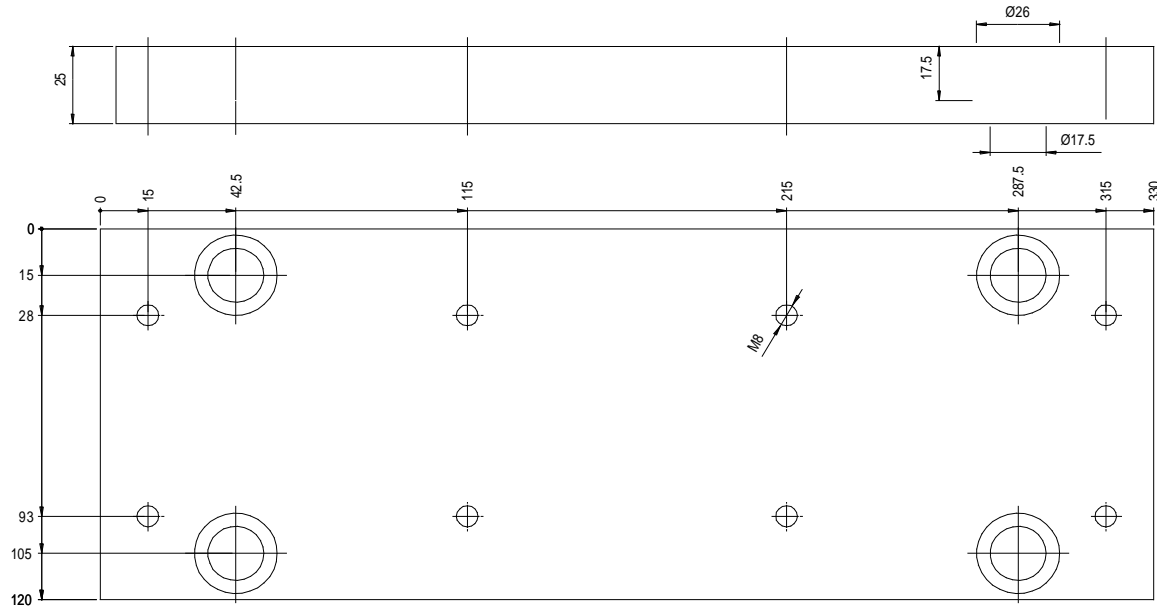
Mounting plate to A 570 C

HS.Nr. V17002



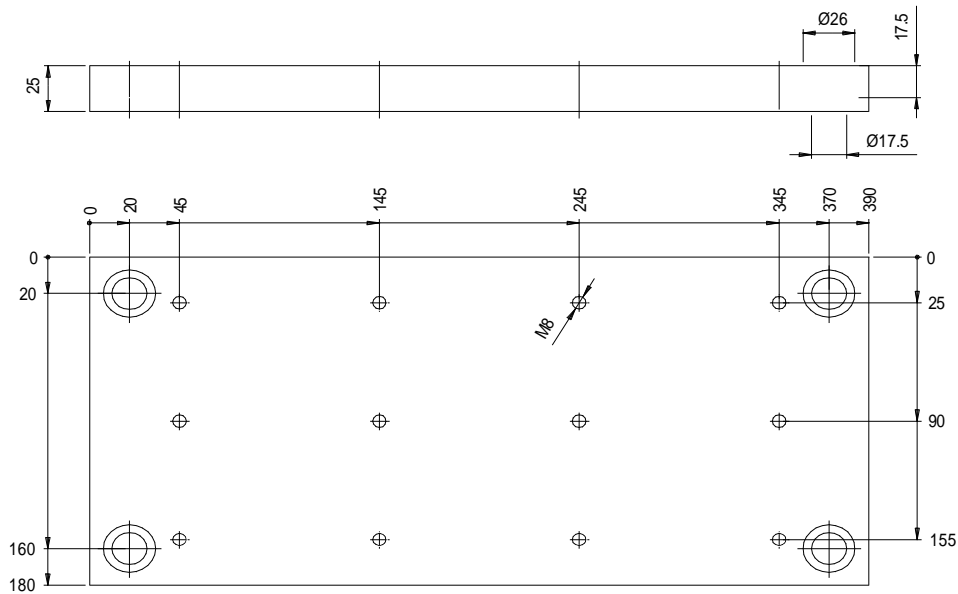
Mounting plate to Boy 15 S / 22 S

HS.Nr. V1090



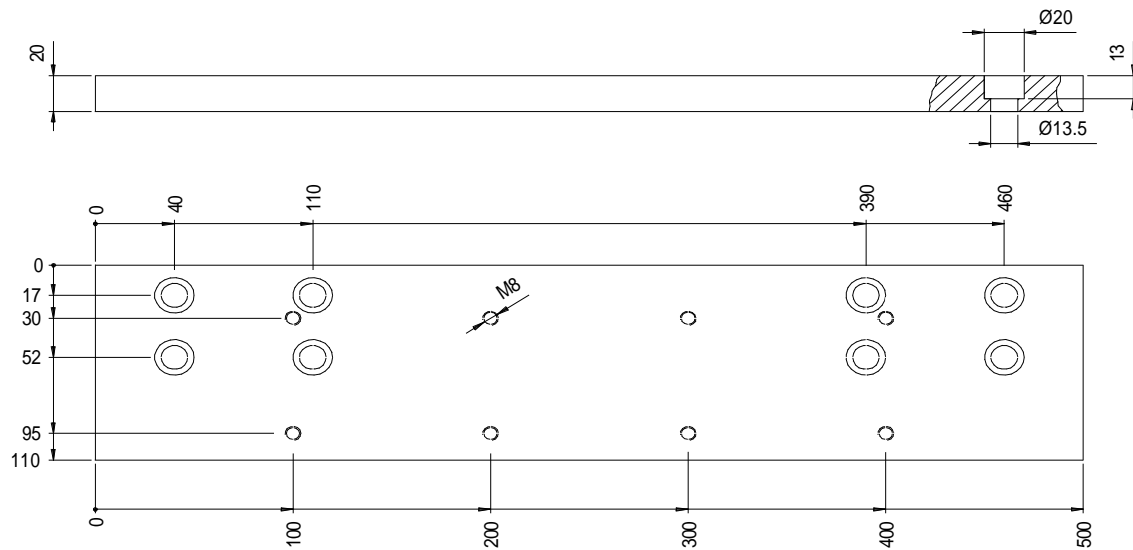
Mounting plate to D 85 / 100 NC III

HS.Nr. V1693



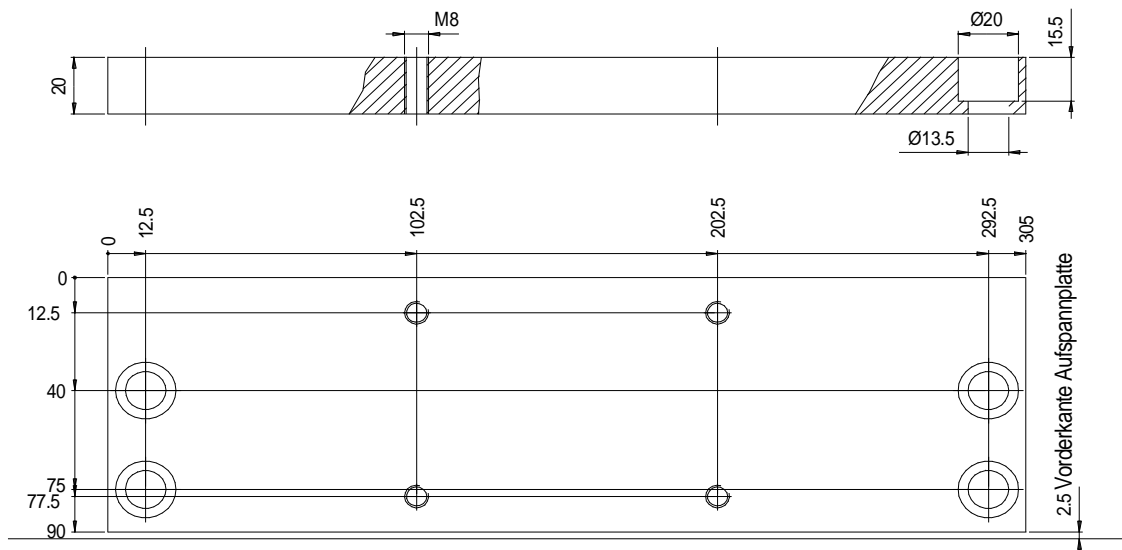
Mounting plate to D 175/200/210/250/275/300/320/325NC

HS.Nr. V1694



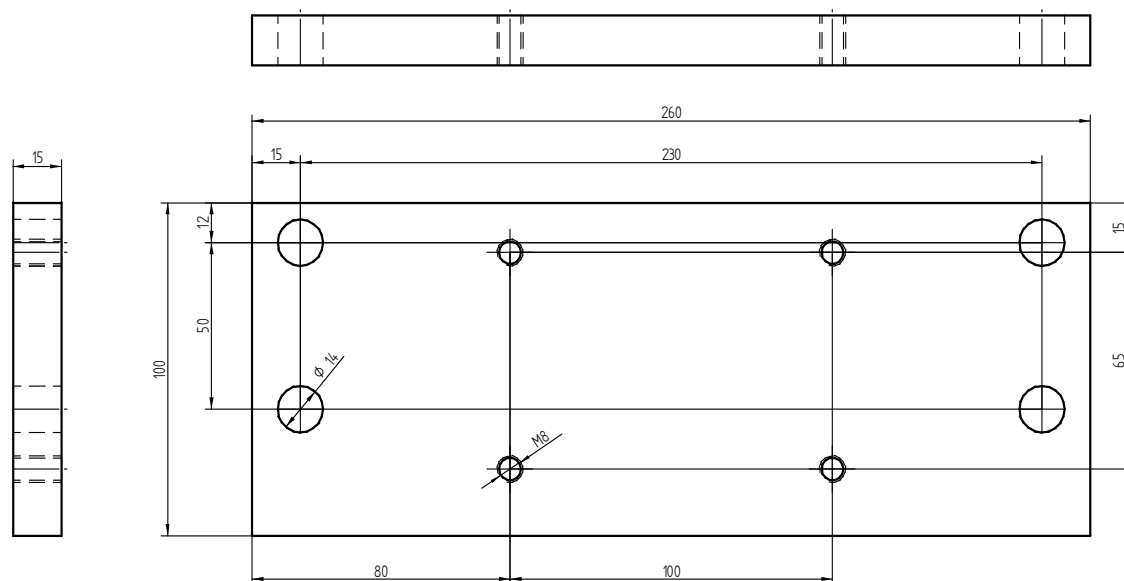
Mounting plate to D 50 / KM 40

HS.Nr. V1700



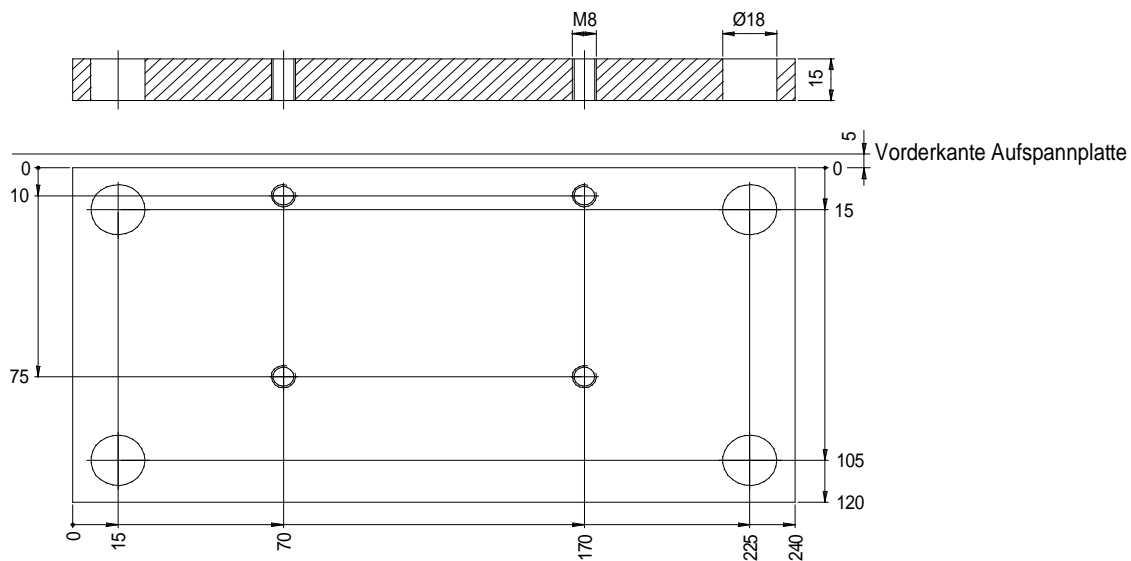
Mounting plate to D 305 / 90 / 20 / Viva25

HS.Nr. V13789



Mounting plate to Fanuc Roboshot 50t

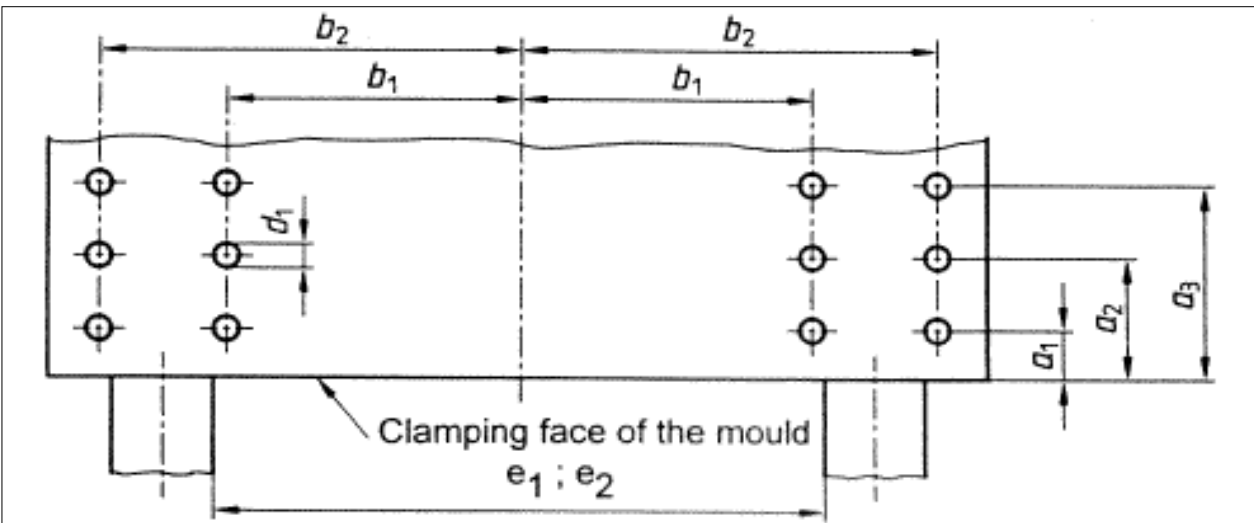
HS.Nr. V294010



Mounting plate to F 130 / FM 130 / FM 140 / FM 160

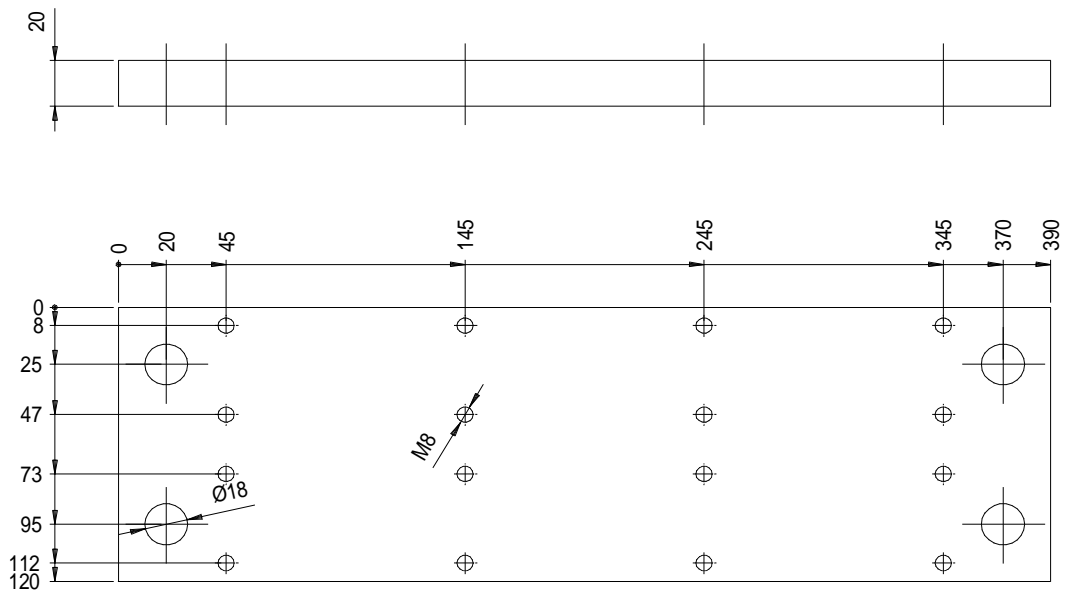
HS.Nr. V1667

Overview of the Euromap standards



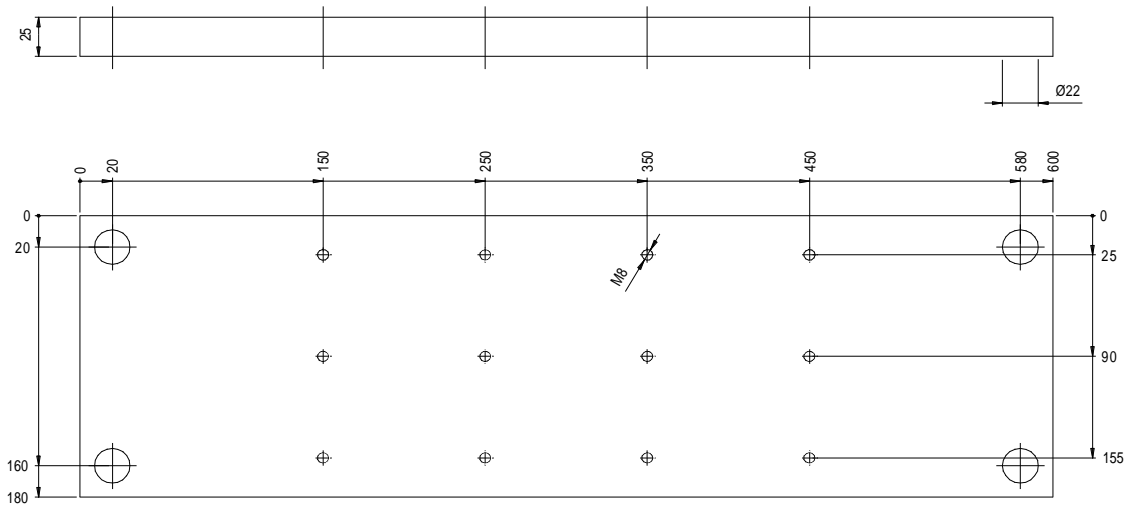
EUROMAP overall size ¹⁾	$e_1 ; e_2$	d_1	a_1	a_2	a_3	b_1	b_2
E 5	315	M 12 x 24	17,5	52,5	-	140	210
E 6	355	M 12 x 24	17,5	52,5	-	140	210
E 7	400	M 16 x 32	35	105	-	140	245
E 8	450	M 16 x 32	35	105	-	175	280
E 9	500	M 16 x 32	35	105	-	175	280
E 10	560	M 20 x 40	35	175	-	210	350
E 11	630	M 20 x 40	35	175	-	280	420
E 12	710	M 20 x 40	35	175	-	350	490
E 13	800	M 20 x 40	35	175	-	350	490
E 14	900	M 20 x 40	35	175	-	420	560
E 15	1000	M 24 x 48	70	175	280	420	630
E 16	1120	M 24 x 48	70	175	280	420	700
E 17	1250	M 24 x 48	70	175	280	560	840
E 18	1400	M 24 x 48	70	210	350	560	840
E 19	1600	M 24 x 48	70	210	350	700	980
E 20	1800	M 24 x 48	70	210	350	840	1120
E 21	2000	M 24 x 48	70	210	350	980	1260
E 22	2240	M 24 x 48	70	210	350	1120	1400

¹⁾ see EUROMAP 2/3



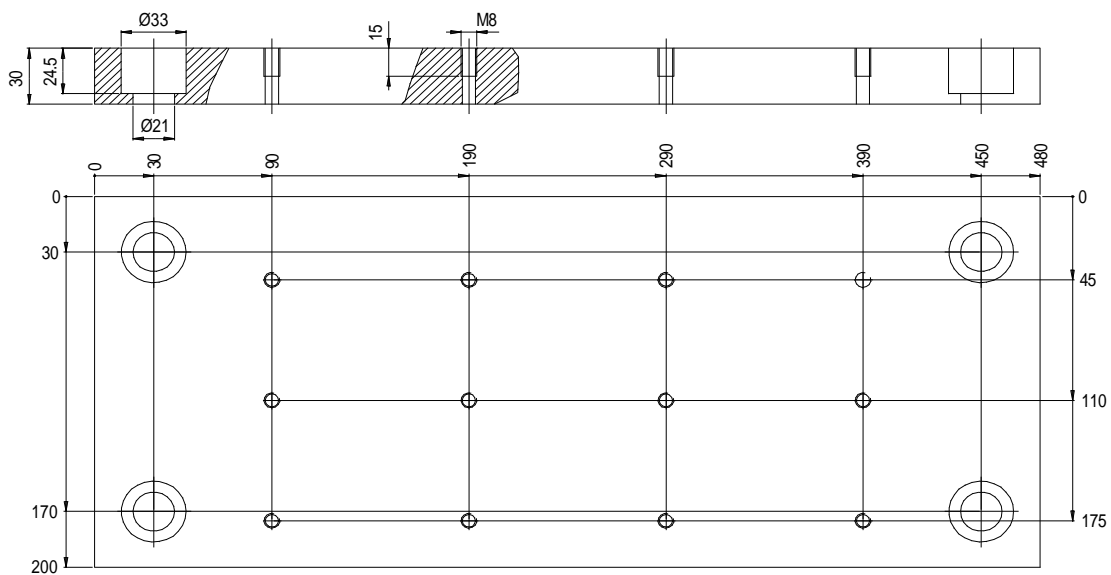
Mounting plate to Euromap 18 - 8/9

HS.Nr. V1610



Mounting plate to Euromap 18 - 11

HS.Nr. V1620



Mounting plate to Euromap 18 - 10

HS.Nr. V286010

HS. Nr.	Bezeichnung	Brutto VP CHF
V051200	Console straight 180 mm for A270S, A320S	152.00
V060200	Console straight 150 mm	410.00
V061200	Console straight 300 mm	510.00
V1001	Console straight 180 mm	65.00
V1002	Console straight 90 mm	50.00
V1005	Console diagonally 90 mm	50.00
V1006	Console diagonally 180 mm	65.00
V1008	Console straight 45 mm	130.00
V1010	Slide console 700 mm	456.00
V1011	Slide console 500 mm	280.00
V1016	Slide console 600 mm	435.00
V1020	Longitudinal adapter for slide console 500 - 800 mm	150.00
V1081	Console straight 205 mm for A 170 CMD	300.00
V1082	Console straight 180 mm for A 221	240.00
V1083	Console straight 250 mm for A 221	202.00
V1084	Mounting plates to A 270 CMD	240.00
V1085	Mounting plates to A 370 CMD	240.00
V1088	Mounting plates to A 270	130.00
V1089	Mounting plates to A 320	180.00
V1090	Mounting plates to Boy 15S / 22S	120.00
V13789	Mounting plates to D 305 / 90 / 20 / Viva25	160.00
V1475	Slide console 500 mm spezial for A Vario 270 / 370 / 470	360.00
V1479	Console diagonally 160 mm for A 220 S, A320 S	152.00
V1504	Slide console 800 mm	486.00
V1604	Mounting plates to A 270 / 320 / C / CMV / V	920.00
V1608	Mounting plates to D 60	150.00
V1609	Mounting plates to A 220 D / H / M	150.00
V1610	Mounting plates to Euromap 18 - 8/9	180.00
V1611	Mounting plates to A 220 D / H / M	150.00
V1620	Mounting plates to Euromap 18 - 11	320.00
V1621	Mounting plates to A 270 D / H / M / V	150.00
V1622	Mounting plates to A 320 D / H / M	150.00
V1623	Mounting plates to A 270	550.00
V16231	Console diagonally 178.5 mm for A 270 S , A 320 S	250.00
V16241	Console straight 150 mm	410.00
V16242	Console straight 300 mm	510.00
V1631	Mounting plates to A 470 / 520 C / M / V	850.00
V1660	Mounting plates to D 80 / 100	230.00
V1667	Mounting plates to F 130 / FM 130 / FM 140 / FM 160	220.00
V1675	Mounting plates to A 470 / 520 C / M / V	650.00
V1693	Mounting plates to D 85 / 100 NC III	190.00
V1694	Mounting plates to D 175/200/210/250/275/300/320/325NC	220.00
V1695	Mounting plates to A 370 / 420 C / M / V / CMD	920.00

HS. Nr.	Bezeichnung	Brutto VP CHF
V1700	Mounting plates to D 50 / KM 40	200.00
V17002	Mounting plates to A 570 C	240.00
V1708	Mounting plates to A 270 C	230.00
V1709	Mounting plates to A 370 / 420 C / M / V	260.00
V2091	Turning console 2x90° indexes	1'420.00
V286010	Mounting plates to Euromap 18 - 10	280.00
V294010	Mounting plates to Fanuc Roboschot 50t	140.00
V348020	Console straight 264 mm for A420S, A470S	220.00